

Brunel after Covid: are we at the previous location or the next floor?

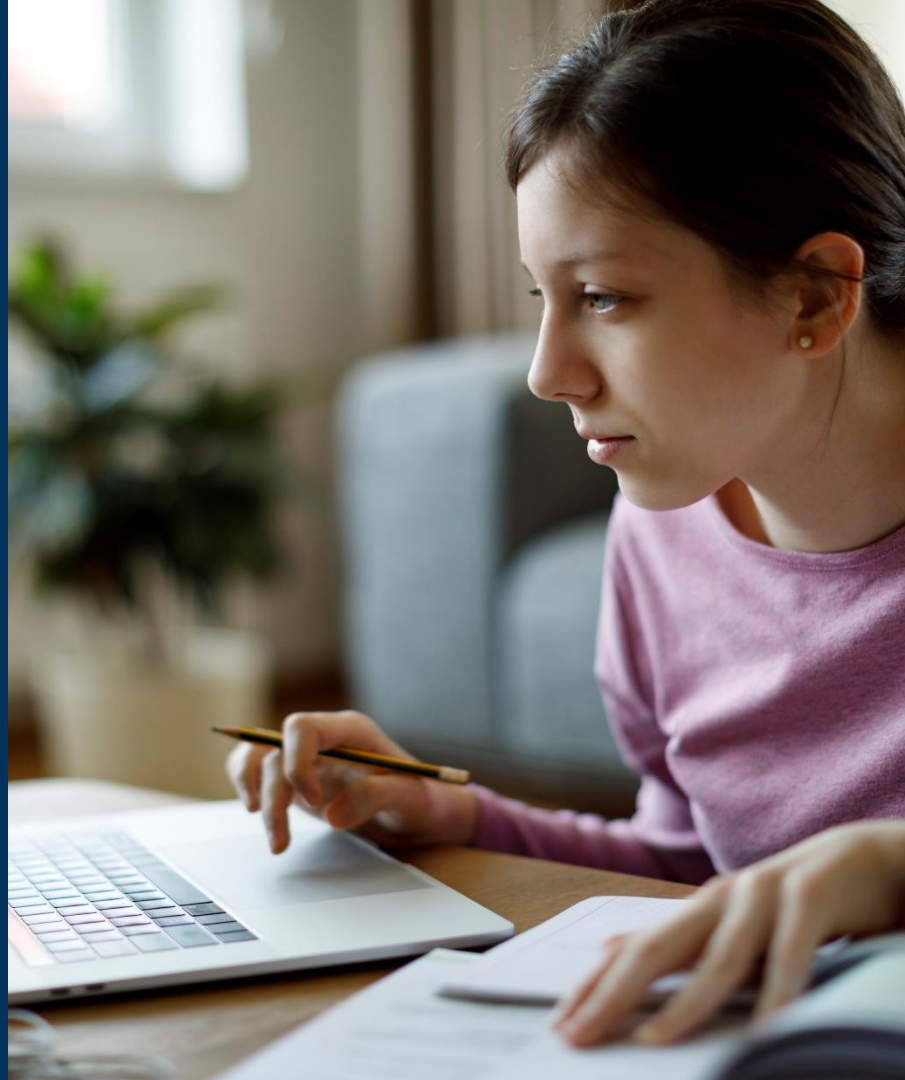
Dr Inna Namestnikova

Dr Noel Parnis

Dr Monica-Cristina Hess

The Sigma Network & The Open University

1 December 2022



Teaching and working at Brunel University

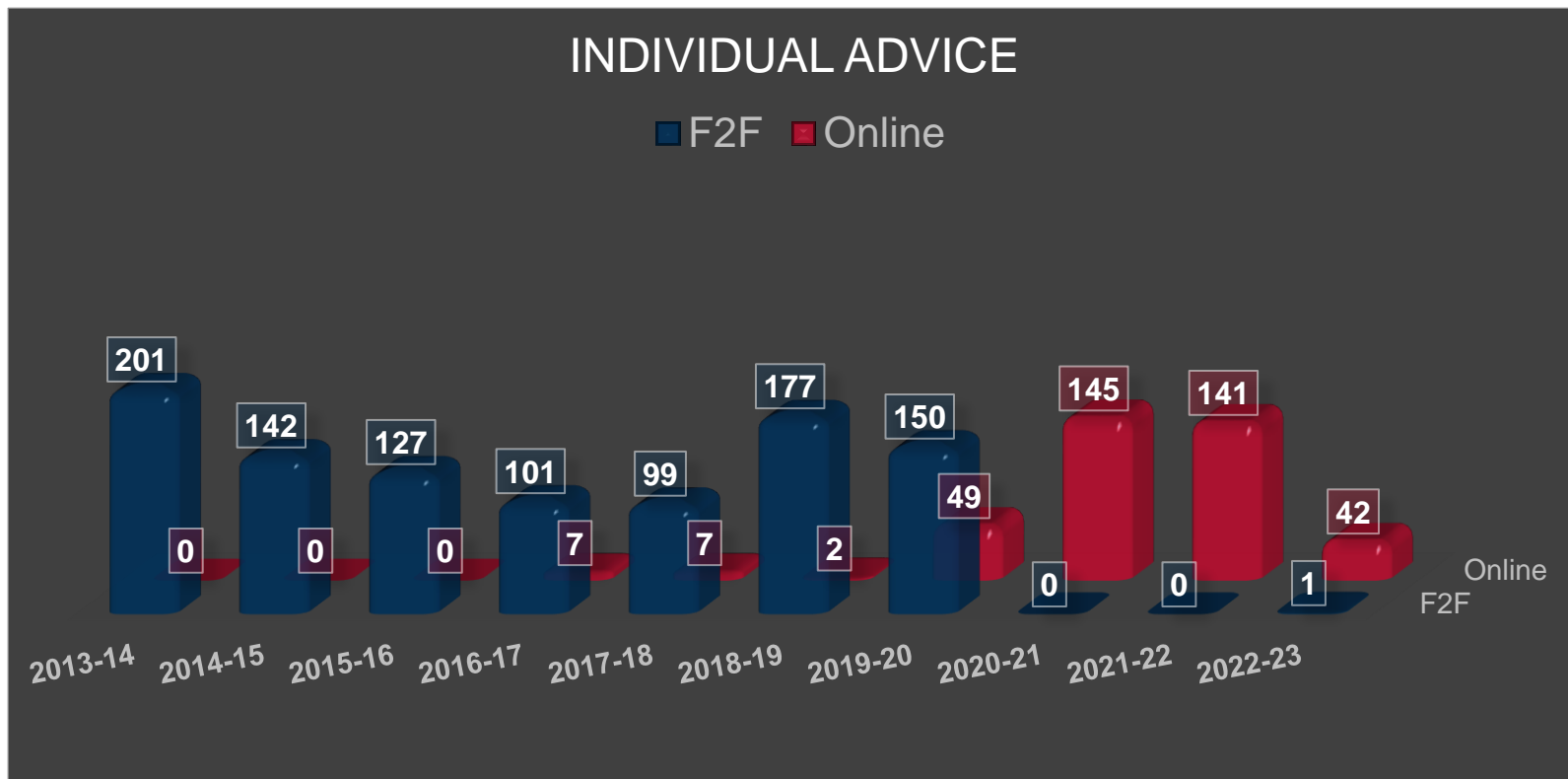
- Dual-Delivery in centralised teaching spaces 2021/22.
- Teaching is in person and on campus 2022/23. Sessions are recorded.
- Staff used different conference software to work remotely (Blackboard Collaborate, Zoom or MS Teams).
- Most of the exams are on campus. Some departments still run remote exams.
- Hybrid working at Brunel.
- Brightspace: a new Virtual Learning Environment from September 2022.

Academic skills (ASK)

Maths and statistics support

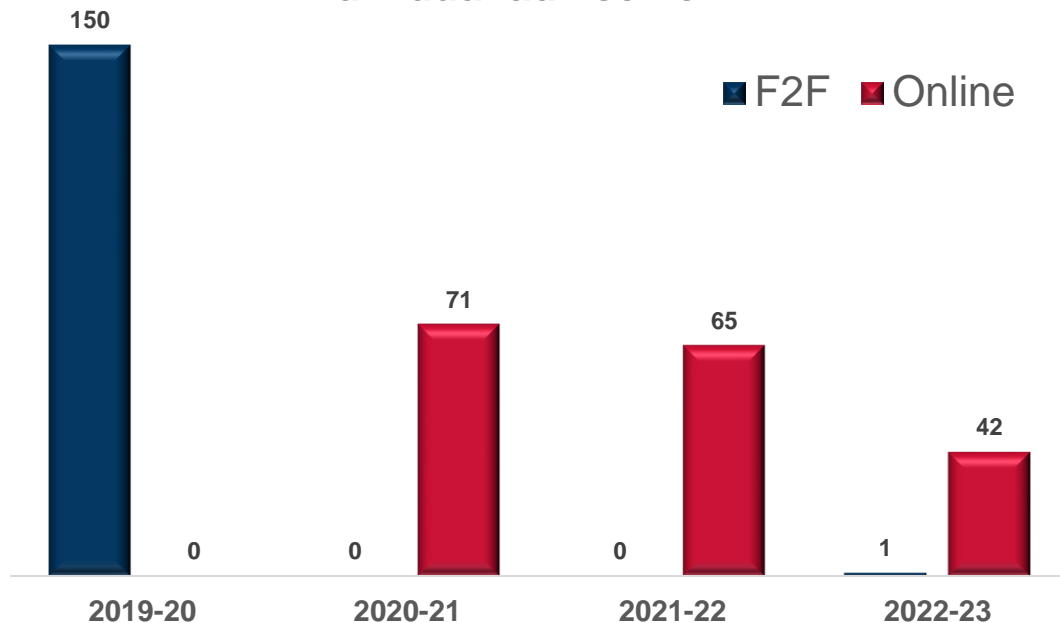
- All activities were online in 2021/22.
- Workshops and individual support are on campus and online in 2022/23.
- In advance, students must book online 1-2-1 maths sessions (via Outlook Office 365) and all statistics sessions (via LibCal).
- For 1-2-1 maths sessions on campus, no booking is required.
- “Back to maths” event was on campus this year.
- Maths Café will be two weeks on campus and two weeks online.
- A mix of online and F2F sessions during the ASK central events.

Maths support statistics

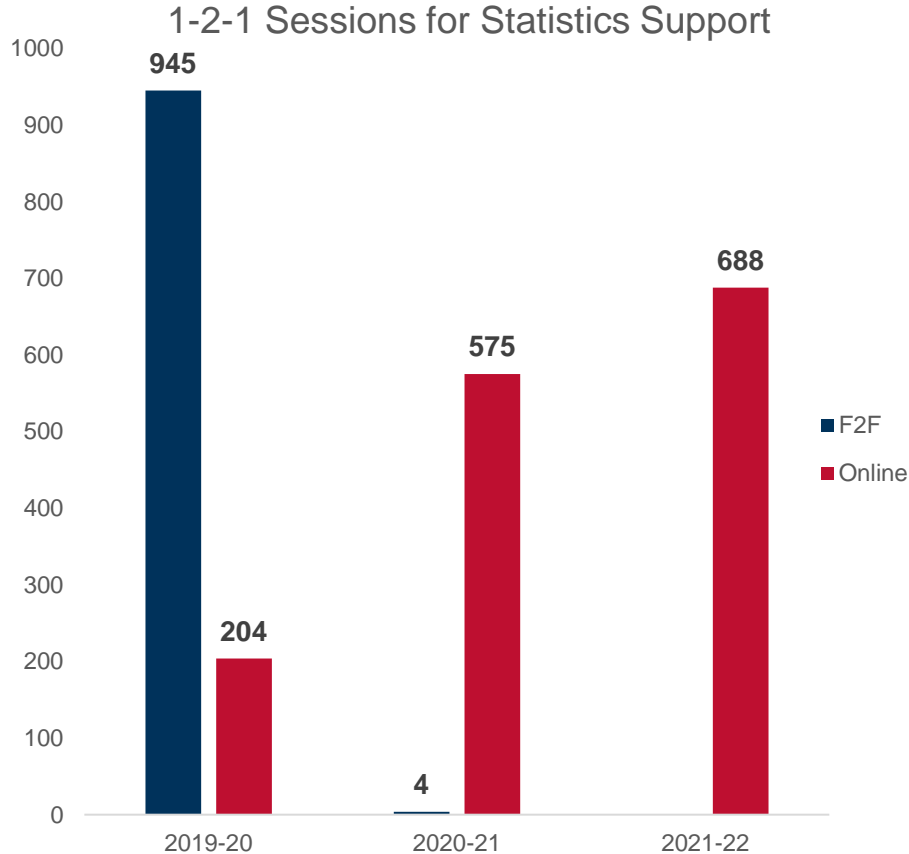


Maths support statistics

Individual advice Term 1

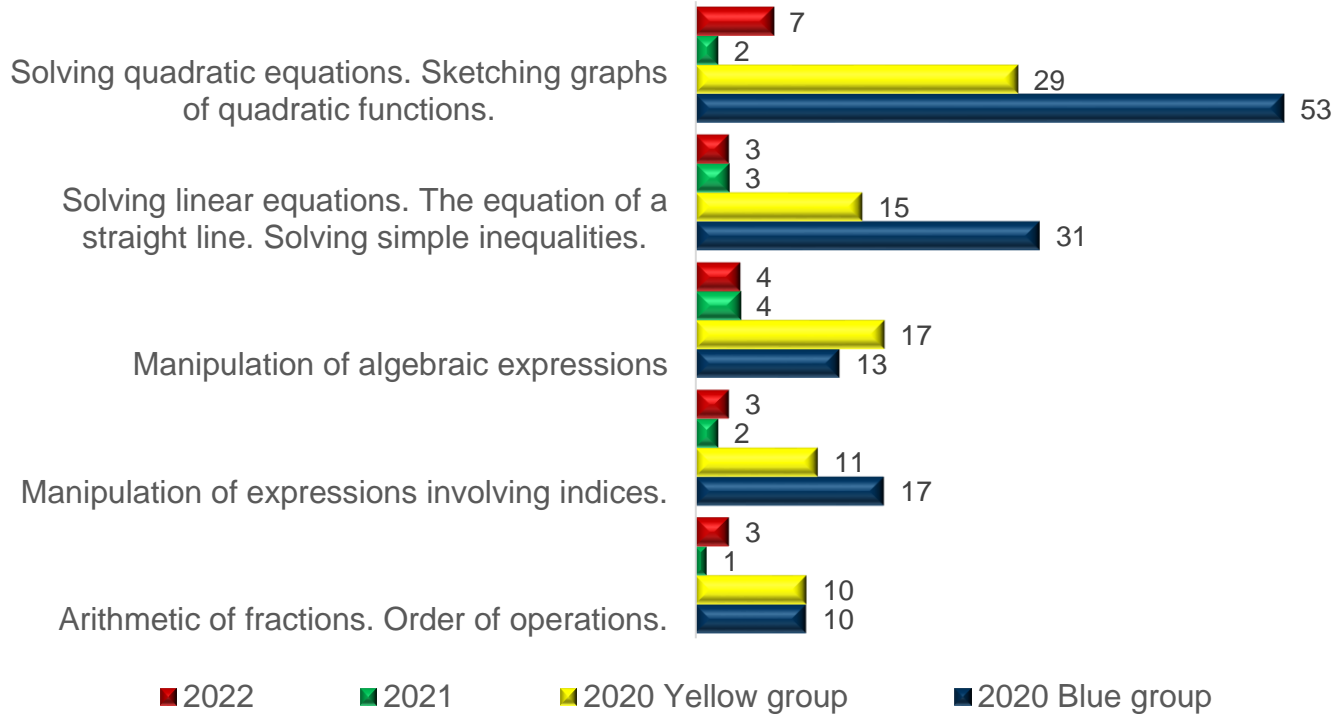


Stats Support – 121 Sessions



We consider 2019-20 figures to represent pre-COVID scenario
We consider 2020-21 figures to represent lockdown scenario
We consider 2021-22 figures to represent recovery scenario

Back to Maths



Problems and challenges in the maths and statistics support

- Low attendance of the central workshops. However, online statistics sessions for the Graduate School course have been well attended.
- Low attendance of F2F maths sessions. Find a more suitable time for F2F sessions, as they may clash with the main sessions.
- How can we improve advertising our service?
- Students prefer to discuss questions from their worksheets. They do not want to attend not subject-related sessions or do not subject-related examples.

Problems and challenges in the maths and statistics support

- There is low motivation to learn maths and statistics.
- Collaboration with some departments is still a problem.
- Students do not realise their low level of algebra knowledge.
- Problems with teaching room booking.
- Migration from Blackboard to Brightspace took too much time, and there are still problems with using this VLE.

Moving to the next floor

- Many current maths courses include tasks using a computer language (MATLAB, Python etc.). The revision session may be a mix of maths and computer tasks.
- The number of UG students decreased in Brunel. However, the number of PG students increased. How can we help PG students? Do they need any maths support?
- What is the best way of delivering Python, SPSS, R or MATLAB sessions: online or in the lab?
- Students are familiar with different conference software (Blackboard Collaborate, Zoom or MS Teams). We can use any more relevant software for a particular teaching activity.
- It looks like maths and statistics support online works better.

Thank you.