

# CETL-MSOR 2015: Sustaining Excellence

## Pump up the $V=\pi r^2 h$ ?

Sally Dodsley & V Sharma

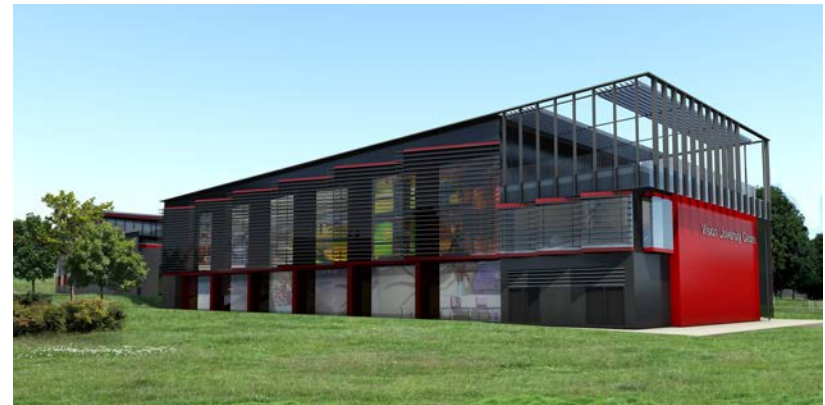
**VISION UNIVERSITY CENTRE**



# Who are we?



- West Nottinghamshire College
- Mansfield, Nottinghamshire
- Approximately 500 HE students



**VISION UNIVERSITY CENTRE**



# Pre-HE curriculum changes

- Study programmes at Level 3 – will we see a ‘law of unintended consequences’?
- Possible negative impact on students
- Impact of ‘core maths’ on students?
- How many will enter 2016 without GCSE Maths?

**[core:maths]** support programme

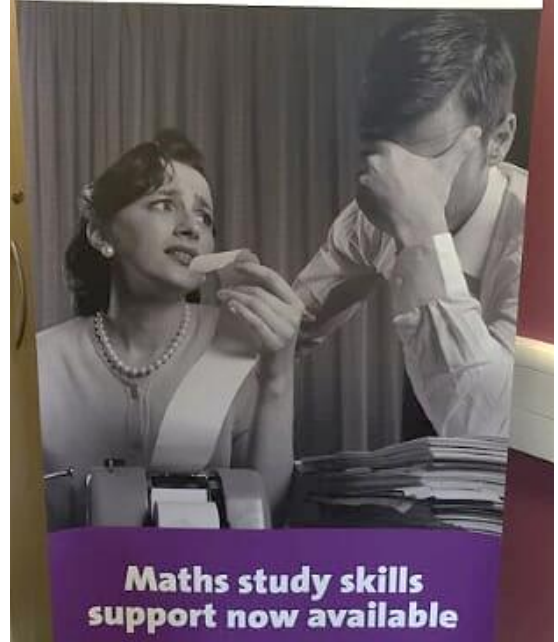
**VISION UNIVERSITY CENTRE**



# Barriers

- Maths anxiety
- Lack of confidence
- Previous experience
- Studied Maths a long time ago
- Do not see the relevance

## THINGS NOT ADDING UP?



**VISION UNIVERSITY CENTRE**



# Maths audit

- Engineering – High level Maths
- Business Management – Finance
- Hair and Beauty Management – Finance
- Performing Arts - Finance
- Travel and Tourism - Finance
- Sport – Statistics and biomechanics
- Computing – Routing concepts
- All HE courses include a project
  - Opportunity for statistical analysis

**VISION UNIVERSITY CENTRE**





# The volume so far...

- Prospectus/Website
- Applicant Event
- Summer School



# VISION UNIVERSITY CENTRE



- Maths Hubs
- Moodle Resources



**VISION UNIVERSITY CENTRE**



- Workshop Sessions:
  - Build your confidence in Maths
  - Numeracy tests (QTS)
  - Data analysis for projects
- Staff Development Sessions
- Senior Exec Meetings

## HELP WITH MATHS

### MATHS AND STATS SUPPORT AREA



#### A quiet area to develop and improve your Maths skills

You will need to use Maths during your HE studies across a range of projects and subjects:

- Data collection and analysis of statistics for business, sports, criminal justice and education studies
- Modules in performing arts and finance for costing, accounts and managing budgets
- Using calculus and algebra in engineering
- Analysis of budgets, percentage profits and estimations for business
- Looking at matrices, vectors, algebra and statistics for computing
- Employers may set numerical reasoning tests as part of the interview process

#### Maths study areas are here to help you:

- Improve your confidence in Maths
- Help with the maths elements of your course
- Help with analysing statistical data for your projects
- Support with numeracy reasoning tests for job applications

If you've had a break from Maths and need support, help and guidance, visit the Vision University Centre, room 922, Derby Road and room 105 at the Engineering Innovations Centre, Oddcroft Lane.

Alternatively, book an appointment for one-to-one support.  
Email V - HE and international study skills coach [vandana.sharma@wnc.ac.uk](mailto:vandana.sharma@wnc.ac.uk) or call 01623 627191 ext 8390

# VISION UNIVERSITY CENTRE





# Increasing the volume - 2015

- Creating bespoke workshop sessions
- Finance workshops
- Targeted approach to 1-2-1 support
- Increased number of staff



**VISION UNIVERSITY CENTRE**



# Thomas International



- General Intelligence Assessment
- Looks at how people process information
  1. Reasoning
  2. Perceptual Speed
  3. Number, Speed & Accuracy
  4. Word meaning
  5. Spatial Visualisation



**VISION UNIVERSITY CENTRE**



# TAKE THE SIGMA CHALLENGE AND BREAK THE CODE



It starts at <http://tinyurl.com/sigmacompetition>  
Follow a series of clues and mathematical calculations to take you on a journey  
through college. Will you claim the prize?



# VISION UNIVERSITY CENTRE



# Conclusions

- Moodle resources
- Workshop sessions
- Sustainability

**VISION UNIVERSITY CENTRE**

